

VILLAGE VOICE

The newsletter for the community of Orford and Gedgrave

ISSUE No. 253 APRIL 2013

Edited by: Roger Hipwell

Published by: Orford and Gedgrave Parish Council and New Orford Town Trust

Printed by: Leiston Press Ltd.

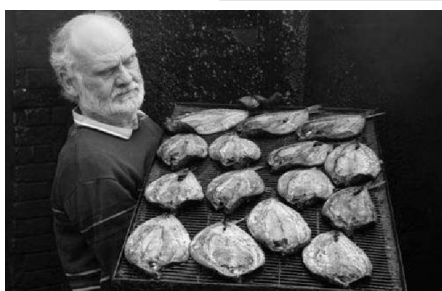
Although published and funded by Orford and Gedgrave Parish Council and New Orford Town Trust, Village Voice is totally unbiased in its reporting.

The council therefore holds no responsibility for its content except that submitted by and on behalf of the council or the trust.

ALL COPY MUST BE RECEIVED BY THE 24TH OF THE MONTH FOR INCLUSION IN THE FOLLOWING MONTH'S ISSUE, PREFERABLY BY EMAIL TO:

orfordtownhall@tiscali.co.uk or villagevoice@live.co.uk OR PUT THROUGH THE TOWN HALL LETTERBOX

PRIORITY FOR INCLUSION IS GIVEN TO ARTICLES THAT ARE ABOUT OR DIRECTLY AFFECT THE COMMUNITY OF ORFORD AND GEDGRAVE AND INCLUSION IS SUBJECT TO EDITING AND AVAILABILITY OF SPACE



April Dates for Your Diary

Saturday 13th April: **Orfordness Volunteer Day** - Orford Quay 9.30am

Saturday 13th April: **Alde and Ore Association AGM** - Thorpeness Country Club 11.00am

Saturday 13th April: **Orford Flower Show Past & Present** - Orford Town Hall 6.00pm

Tuesday 16th April: **Container Gardening** - Sudbourne Village Hall 7.30pm

Saturday 20th April: **The Unbearable Pleasure of Being a Woman** - Orford Church 6.30pm

Wednesday 24th April: **Christies Care Open Day** - Street Farm Road, Saxmundham 9.30am

Saturday 27th April: **Eastern Angles** - Orford Town Hall 7.30pm

THE WAKE OF STEVE "SMOKIE" RICHARDSON

I'd like to take this opportunity to say a huge, huge thank you to Tina Moss for organising Steve's incredible Wake. She rallied, what seemed to be the whole village into helping her set up a veritable banquet. I've never seen so much food on the Snooker table. To every single one of you that helped, and I have all the names, far too many to print here, I want to say a really massive thank you.

If anyone ever needs a party organised, Tina Moss is the woman you need to call.

The collection in the Church, for Help for Heroes raised £1215.00 a massive collection for a massive man.

Tim, our son, also wants everyone to know how much he appreciates everybody's efforts.

We all miss you Steve. R.I.P

Veronica Buckley (SADLY SOLE PARTNER AT RICHARDSONS' SMOKEHOUSE, NOW RE-OPENED FOR BUSINESS)

ORFORD AND GEDGRAVE PARISH COUNCIL AND NEW ORFORD TOWN TRUST

It is not always appreciated that these are two entirely separate bodies with the Parish Council operating under Government Legislation and the Trust under its own Trust Deed overseen by the Charity Commission.

Parish Councillors are elected to the Parish Council every four years but as the Parish Council is the Trustee for the New Orford Town Trust, the Parish Councillors also act as Trustees.

Separate agendas, meetings and minutes are kept for each.

The Parish Council is responsible for reviewing planning applications, village greens, affordable housing, emergency planning, street cleaning, recreation ground, play area, tree maintenance and implementing Government legislation.

The Trust owns and manages Baker's Lane Cottages, the Town Hall, Quay Street car park, Orford Quay, the River and Riverside.

Income and expenditure has to be kept entirely separate for Parish and Trust with each being subject to the law and rules of the Government and Charity Commission respectively. Both Parish and Trust are subject to separate annual audit.

Anne Macro - CHAIRMAN ORFORD AND GEDGRAVE PARISH COUNCIL

Michael Pearce - CHAIRMAN NEW ORFORD TOWN TRUST

DOGS ON LEADS



KEEP DOGS ON LEADS

It has been brought to our attention that people are not keeping their dogs on leads on the Recreation Ground. There are signs as you enter the Recreation Ground that clearly state that dogs must be kept on leads if you wish to use the Recreation Ground. Also we have been informed that dogs have been seen in the fenced in play area which again has signs clearly stating no dogs allowed.

We would appreciate your support with this matter as we wish to keep this area a safe and clean space for children and families to enjoy.

Orford and Gedgrave Parish Council

ORFORD GENERAL STORE



Following our article in last month's Village Voice about the shop being best in the east, congratulations to Penny Teale and her team at Orford General Store for beating off the competition in the National final to be crowned Village Shop and Post Office United Kingdom and Ireland Champion.

FISHING FOR A SENSE OF PLACE



A survey has been launched to find out how the fishing industry influences the way people feel about where they live

How does marine fishing influence the way that people who live and work in Suffolk's coastal communities feel about where they live? Gone are the days when over 100 trawlers landed their catch in Lowestoft and Suffolk's beach-launched small-scale fleets were able to land plentiful catches. Although fishing has diminished, a handful of fishermen still make their living from the sea and freshly caught fish and seafood is on the menu of many of Suffolk's pubs and restaurants.

The University of Greenwich (School of Science) is conducting a major new survey, called Sensing Fishing Places, to find out how marine fishing contributes to a sense of place in Suffolk. The survey is being conducted in fishing communities on both sides of the English Channel and the southern North Sea to create a snapshot of fishing places at the start of the 21st century. With fishing in decline in many areas, and inshore fleets struggling to cope with reductions in quota allocation, it is important to understand the social and cultural value of fishing for coastal communities. The results of this survey are intended to better inform fisheries policy and management and will be made publicly available to local communities and decision makers.

The survey is part of an Interreg 4a 2 Seas Project entitled GIFS (Geography of Inshore Fishing and Sustainability) led by the University of Greenwich, with partners in England, France, Belgium and the Netherlands. For further details, visit the GIFS website: www.gifsproject.eu.

If you live or work in a fishing town or village in Suffolk and would like to take part in this survey, please go to the following link to complete the survey online:

<http://www.survey.bris.ac.uk/greenwich/sensingfishing>

Or, for a paper copy of the survey, please contact Dr Julie Urquhart at GIFS@greenwich.ac.uk or telephone 0208 331 8227/9751.

The survey will run until 19th April 2013. Join others in shaping the voice of what marine fishing means for our coastal communities today

Dr Julie Urquhart - SENIOR RESEARCH FELLOW

The Orford and District
Inshore Fishermen's
Association
2008



There are eight under ten metre fishing boats working out of Orford with a few more in Aldeburgh and Felixstowe. Their future is under pressure from extraction and renewable energy companies damaging their traditional fishing grounds as well as the criminal allocation of fishing quota which restricts the amount of fish they are allowed to land despite plentiful supplies off this coast. Please complete this survey to show your support for a traditional industry that fishes in a sustainable way or risk losing this industry for ever.

Roger Hipwell - Chairman

EASTERN ANGLES

Following previous successful visits Eastern Angles will be returning to Orford Town Hall on Saturday 27th April 2013 with their new production of The Long Life and Great Good Fortune of John Clare. The play focuses on a man who believes he is John Clare. His psychiatrist, Melody, is busy swotting up on the poet trying to fathom the reasons behind her patient's delusion. Meanwhile, Melody's partner, writer

and literature graduate Rafe, is fixated on his own version of the Clare legend. In their search for the real story all three characters reveal some startling truths about themselves. The performance starts at 7.30pm and tickets are available from the New Orford Town Trust office, telephone 01394 459172.

Kara Reed - CLERK TO NEW ORFORD TOWN TRUST

FUNDRAISING ORGANISER WANTED



Cats Protection has grown to become the UK's leading feline welfare charity. As well as helping home cats and kittens we also provide an array of cat care information; promote the benefits of neutering and seek to inform people of all ages about cats and their care.

Framlingham and Saxmundham branch of Cats Protection is seeking a Fundraising Organiser to join our dedicated band of volunteers. The charity relies solely on volunteers and generous donations from people who love cats and are interested in their welfare. We attend many events during the year which together with our homing fairs raise the majority of our funding. Like every other organisation we need to maximise every penny and need constantly to refresh our means of revenue. We are looking for someone who will seek out new opportunities for fundraising events, activities and sponsoring, and work with the Committee to plan and coordinate events. Are you the person we need? If you have some time to spare, the only other qualifications needed to join us are enthusiasm, good communications skills, and of course an affection for felines. You can find out more about the branch on our website or by calling on the number below.

CAT OF THE MONTH: ZIGGY is a friendly, handsome brown and white six year old fur ball. He left home when his owners got a dog. Ziggy is looking for a caring home and someone to help keep his lovely long coat in fine condition.

For more information about Ziggy and the other cats in our care or if you would like to join us as a volunteer see on our website www.framandsax.cats.org.uk or telephone 01728 723499.

Sara Turley - framsaxcp@gmail.com

NEWS FROM ORFORD MUSEUM

We still have tickets available for the showing of Veronica Worrall's film of the Orford Flower Show Past and Present on Saturday 13th April. This promises to be a nostalgic and entertaining evening starting with a welcome glass of wine followed by the film and then supper. There will also be a cash bar and raffle. Tickets are £15 each. If you would like to come, please contact Elizabeth Spinney on 01394 450622 or at a.spinney43@btinternet.com.

Orford Museum is also planning a new exhibition in the church to celebrate Benjamin Britten's special relationship with St. Bartholomew's, Orford. This will be in place from Easter onwards.

Elizabeth Spinney - CHAIRMAN, FRIENDS OF ORFORD MUSEUM GARDENING CLUB

Our April speaker, Richard Ford, has described himself as a poacher turned gamekeeper. He went from exhibiting to judging. After studies at both London and Cambridge Universities, his early speciality was Plant Pathology. In 1983 Richard set up Park Green Nurseries, and he has won 180 Gold Medals, including seven at Chelsea. A popular speaker as well as a popular judge, his subject on Tuesday April is "Container Gardening". At Sudbourne Village Hall at 7.30pm. Non-members are very welcome. Their fee £2.

Lorna Davis - 01394 459449

RENDLESHAM CHILDREN'S CENTRE

Sycamore Drive, Rendlesham IP12
2GF

Orford Stay and Play

Every other Monday from 1.30pm to 3.00pm
at Orford Shrimps Playgroup School Lane Orford
(Term Time only)

Come along to an indoor and outdoor free play session

For children between the ages of 0 - 5 years

A range of activities will be provided in partnership
with Orford Shrimps Playgroup

with Children Centre staff attending once a month.

We offer a FREE programme of activities.

Please call (01394) 462191 for more information

Email: Rendlesham@suffolk.gov.uk



ALDE AND ORE ESTUARY PARTNERSHIP (AOEP)

The Annual Community Meeting will be held on 23rd May 2013 in Thorpeness Country Club at 6.00pm.

Sir Edward Greenwell Bt., Chairman of the AOEP, will discuss the progress of the Partnership's first year. If you are in local business, district/parish councillor, landowner or a householder in the estuary, how our defences are managed in the decades to come is of vital importance. We are delighted that a speaker from the insurance industry has agreed to discuss the current insurance issues in relation to the Statement of Principles which expires on 30th June 2013. If the Government and the insurance industry are unable to agree a replacement or renewal of the Statement of Principles, it may well be that property in the floodplain will be expensive or even impossible to insure, and also to mortgage. Please support this meeting, everyone is welcome. Drinks will be available after the meeting.

Minutes and agendas of the AOEP are sent to all Parish Council clerks and are available through them. Meetings are open to the public if they should wish to attend. The next two meetings will be held on 2nd May and 10th July all in Orford Town Hall at 2.00pm.

Members of the AOEP are:- Sir Edward Greenwell Bt., (Chairman, Farmer Nominee), Alison Andrews (A&O Association Nominee), Guy Heald (Finance and Business), David McGinity (Butley Parish Council Nominee), Hugh Pilkington (Orford and Gedgrave Parish Council Nominee), Philippa Stewart (Iken Parish Council Nominee), Jane Marson (Landowner Nominee), Richard Marson (Aldeburgh Town Council Nominee), Brian Johnson (Boyton and Bawdsey Parish Council), Angie Mason (Householder Representative), Barry Leach (Aldeburgh and Orford Business Associations Nominee), Ben McFarland (Ecological Representative/RSPB Nominee) Partnership Secretary: Amanda Bettinson (amanda.bettinson@gmail.com)

Alde and Ore Association AGM

The Annual General Meeting of the Association will take place on Saturday 13th April 2013 at Thorpeness Country Club at 11am. Coffee will be available from 10.30am. The 53 Flood Exhibition film produced by Angie Mason Floods of Memories will be shown and the Guest Speaker is Andrew Hawes who will be speaking on the sustainability of the river walls. This meeting is open to everyone.

Amanda Bettinson

APRIL SERVICES AT ST BARTHOLOMEW'S

7th April - Easter 2

08.00am Holy Eucharist - Rev D Murdoch

11.00am Holy Eucharist - Rev D Murdoch

14th April - Easter 3

08.00am Holy Eucharist - Rev D Murdoch

11.00am Family Service - Mr G Marshall

21st April - Easter 4

08.00am Holy Eucharist - Rev D Murdoch

11.00am Holy Eucharist - Rev D Murdoch

28th April - Easter 5

08.00am Holy Eucharist - Rev D Murdoch

11.00am Village Service - Mr T Allen

5th May - Easter 6 : Rogation

08.00am Holy Eucharist - Rev D Murdoch

9th May - Ascension Day

7.30pm Team Eucharist - Rev D Murdoch

& Team clergy

Revd David Murdoch

SECOND ANNUAL ORFORD FOOD REVOLUTION DAY



Following the success of last year's Food Revolution Day Market to raise funds for Orford School, there will be a bigger, better event this year on Saturday 18th May.

There were 30 stalls with 21 producers last year and it is hoped to increase this to 35 producers in the Market Square and possibly other areas this year with the market, including the Country Market, being open from 09.30 to 15.30. Details are still being worked on and will be published in next month's Village Voice but it is hoped that there will be more street food and a Great Orford Bake Off.

Joanna Brennan, Kate Kilburn, David Grimwood, Roger Hipwell

ORFORD SPORTS AND RECREATION CLUB

Dates for your diary:

Friday 5th April - Bingo/Raffle

Saturday 4th May - Mike Solo

Friday 28th June - In memory of Steve Richardson Fundraising Night

Live music with Dave Taylor/John, BBQ, Raffle. All proceeds to New Pavilion Fund. Donations of raffle prizes would be much appreciated.

Saturday 27th July - Fun Day, BBQ, Bouncy Castle, Tombolas, raffle, classic bikes and vehicles, face painting, archery etc. Disco in the evening

Saturday 14th September - Seafarers Day. To celebrate Orfordness Lighthouse. After several events down by the quay and around the village throughout the day, the procession arrives at the Recreation Ground Club at around 4.00pm. BBQ, teas/cakes, bar, sea shanty group playing with singalong, face painting, live music or disco in the evening.

We are currently collecting donations to go towards a Memorial bench in memory of Steve Richardson to be placed adjacent to the Recreation Ground Clubhouse. There is a bottle for donations at The Smokehouse Shop.

All events open to members and non-members.

Tina Moss - SECRETARY

Jazz at The Pavilion Proudly Presents

The Unbearable Pleasure of... Being a Woman

FEATURING THE DELICATE WARELINGS OF

Miss Leigh McDonald & Miss Joanna Eden

St. Bartholomew's Church Orford Saturday 20th April 2013 Doors open 6.30pm

Tickets £12.50 each from Aspen House 01394450276 or orfordjazz@wellassociates.co.uk

THE UNBEARABLE PLEASURE OF BEING A WOMAN

On Saturday February 16th Joanna Eden and Leigh MacDonald premiered their own compositions with musical theatre and jazz repertoire to a sell-out audience in Saffron Walden at the Saffron Hotel. The response to The Unbearable Pleasure of Being a Woman was so good that a second performance had to be arranged.

Reports of the evening suggest that Orford can expect an evening full of fun and surprises in the church on Saturday 20th April. One satisfied customer wrote to the local paper:

"What a duo!

They were engaging, sassy, bawdy, sharp, funny, sexy, fantastically professional and full of pizzazz.

Don't miss them if you get the chance"

Joanna wowed the audience with her skill as a Pianist, Singer and Wordsmith in Orford at Picnic Jazz at The Pavilion in 2007 and we still have tickets available for this evening of fun and music on Saturday 20th April.

Those of you who enjoyed the jazz evening on St Patrick's Day in the church with Janet Seidel last year will remember what a great atmosphere was generated with 250 people captivated by Janet's stylish singing. We expect this year's event to be as memorable.

Doors will open at 6.30pm and there will be a licensed bar before the performance and during the interval.

Proceeds will go to the Thomas Marshall Education Fund and the Recreation Ground Hut Appeal.

Tickets are still available priced at £12.50 and are available from orfordjazz@wellassociates.co.uk or 01394 450276.

Cheques should be made payable to Jazz at The Pavilion and sent with a stamped self addressed envelope to Aspen House Mallets Lane Orford IP12 2NA

**Roger Hipwell - JAZZ AT THE PAVILION
ORFORDNESS VOLUNTEERS**

On Saturday 13th April at 9.30am there will be an open morning on the Ness for potential volunteers. Anyone interested should telephone Orford Ness National Nature Reserve 01394 450900 in advance to register their interest. On the 13th they need to be dressed in warm/waterproof clothing and assemble on the quay at 9.30am and they will be returned to the quay around 12.00pm - 12.30pm

Duncan Kent - SENIOR RANGER

ORFORD NESS NATIONAL NATURE RESERVE & SUTTON HOO

FREE EVENT TO INFORM SUFFOLK RESIDENTS ABOUT CURRENT CARE CHOICES

As part of the government-backed Good Care Week, one of the UK's leading providers of live-in care is, running a free, all-day event on Wednesday 24th April in Suffolk. Christies Care has designed the day to answer the many questions from those who may need care, their relatives or those associated with the caring profession.

The event takes place at the Christies Care training centre in Saxmundham and is based on their ethos that 24/7 live-in care as an affordable option to the use of residential homes.

Covering the issues which affect so many needing care, those attending can learn from speakers from the Parkinson's Society, Backcare, PASTEL and Age UK. In addition, Christies Care will provide an insight into the training, recruitment and everyday tasks undertaken by carers. The speakers will cover topics such as caring for people with Parkinson's, Alzheimer's, back problems, dementia, learning disabilities and home care as well as big issues like end of life care. As well as the speakers, Julia Dalziel from Suffolk Social Services will be on hand at various points during the day to answer any questions on the Social Services role within the community.

Christies Care director Lin Barnes said: "Everyone is welcome and visitors can attend for the whole day, chat to experts over lunch or just drop in for an hour or so. Attendance to this event is free of charge but those who wish to attend are required to reserve their place before 10th April, as spaces are limited."

To book a place email lin.barnes@christiescare.com or calling 01728 605 013.

The event will be held at Training Centre, Street Farm Road, Saxmundham, IP17 1AL on Wednesday 24th April and more information can be found at www.christiescare.com.

Lin Barnes - 01728 605013

HOME-START SUFFOLK COASTAL

COULD YOU BE A HOME-START VOLUNTEER?



Home-Start Suffolk Coastal is a charity which has provided support to families locally for over 11 years. We support families who have at least one child under 5 and for whom life is an uphill struggle.

Over the past year we have supported over 80 families for many different reasons including families where there is illness or disability, families experiencing mental health issues or feeling isolated and families who have twins or triplets.

Support is provided by volunteers who are parents themselves or have parenting experience. Before visiting a family volunteers attend a preparation course to look at their own experiences and cover subjects such as child protection and local facilities for young families. They are then matched one to one with a family to offer whatever help is needed, a confidential listening ear, an extra pair of hands and eyes, time to spend with the children or support through a difficult time.

Once matched with a family, volunteers receive on-going support, training and expenses.

The course is OCN level 1 or 2 accredited. There are 2 preparation courses starting in the near future, a one week course (Mon-Fri) and another one day a week for 9 weeks.

If you would like to find out more please ring Louise or Sarah at Home-Start Suffolk Coastal on 01394 389402

Sarah Holmes - ADMINISTRATOR